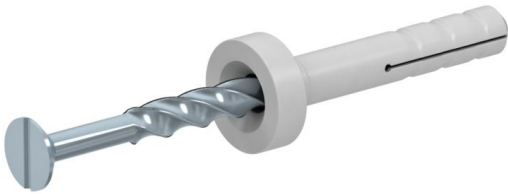


Speedplug SPHZ, wide collar, countersunk head (PL042)

Nail anchor for electrical engineers, sanitary installation engineers, drywall builders and roofers. Pre-mounted knock-in for the mounting of clips, profiles and slats on concrete and calcareous limestone, etc.



Master data

Item number	994402
Type	PL042 SPHZ 8x50
Description 1	Nail plug
Brand	DQ
Dimension	Ø8xL50mm
Colour	Dusty grey; RAL 7037
Material	Steel
Surface	Electrogalvanized
Surface standard	EN ISO 19598 / EN ISO 4042
PU1	200
Unit of quantity	Piece
Weight	1.022 kg
Weight unit	kg/100 pc.

Dimensions

Length	58 mm
--------	-------

Speedplug SPHZ, wide collar, countersunk head (PL042)

Technical data

Pull-out force	2900 N
Drill hole depth	51 mm
Drill hole diameter, min.	8 mm
Thread	M8
Thread metric	8
Halogen-free	yes
Head diameter	10 mm
Head shape	Countersunk head
With edge	yes
With bolts	yes
Nail diameter	5 mm
Nail length	58 mm
Shank diameter	5 mm
Screw system	Screw slot
Pin shape	Nail screw
Mounting type, anchor, tie	Push-through mounting