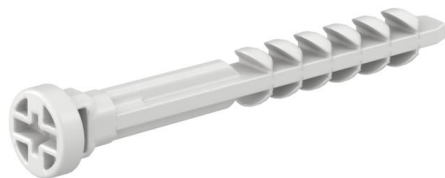


Push-through dowel (PG048)

The proven method to easily mount a Snap-on pipe clip by hand or with the ease of use of a cable tie.



Master data

Item number	905203
Type	PG048 DM 6x50
Description 1	Push-through dowel -Steck-Fixx
Brand	DQ
Dimension	Ø6,0x50mm
Colour	Light grey; RAL 7035
Material	Polyamide
PU1	100
Unit of quantity	Piece
Weight	0.124 kg
Weight unit	kg/100 pc.

Technical data

Version for	Push-fit anchor
Drill hole depth	50 mm
Bore hole diameter	6 mm
Suitable for fastening with cable ties	yes
Shank diameter	5.5 mm
Shank length	50
Suitable for material	Concrete Gas concrete Plasterboard Full brick Hollow brick
Mounting type, anchor, tie	Push-through mounting