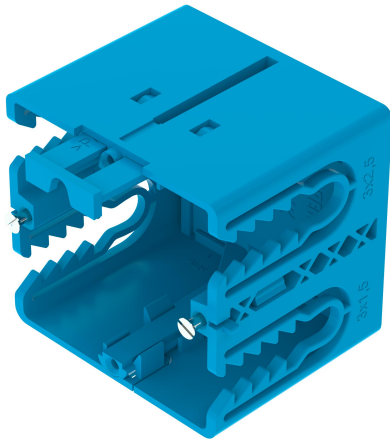


Device installation box Route STYLE single (LK016)

For connecting power and data in trunking systems Route STYLE



Master data

Item number	920046
Type	LK016 GED1
Description 1	Device installation box
Description 2	Route STYLE single
Brand	DQ
Dimension	66x68x71mm
Colour	Light blue; RAL 5012
Material	Polyamide
PU1	10
Unit of quantity	Piece
Weight	4.35 kg
Weight unit	kg/100 pc.

Dimensions

Length	71 mm
Width	68 mm
Height	66 mm

Technical data

Number of units	1
Version for	Closed
Fastening track	Other
Halogen-free	yes
With connection compartment	yes
Box mounting type	Rear wall
Accessory mounting type	Bolts
Strain relief option	yes