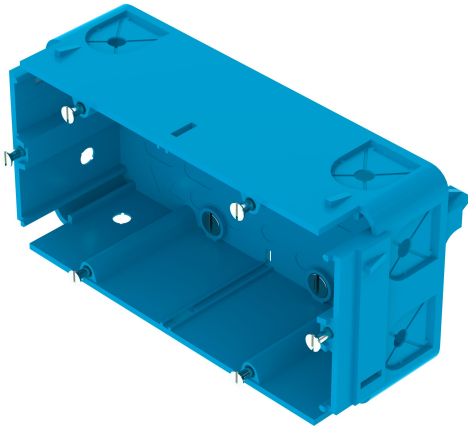


## Device installation box Route PLUS double (LK010)

For connecting power and data in trunking systems Route PLUS



### Master data

|                  |                         |
|------------------|-------------------------|
| Item number      | 920029                  |
| Type             | LK010 GED2              |
| Description 1    | Device installation box |
| Description 2    | Route PLUS double       |
| Brand            | DQ                      |
| Dimension        | 152x70x60mm             |
| Colour           | Light blue; RAL 5012    |
| Material         | Polypropylene           |
| PU1              | 5                       |
| Unit of quantity | Piece                   |
| Weight           | 8.64 kg                 |
| Weight unit      | kg/100 pc.              |

### Dimensions

|        |        |
|--------|--------|
| Length | 152 mm |
| Width  | 70 mm  |
| Height | 60 mm  |

### Technical data

|                             |           |
|-----------------------------|-----------|
| Number of units             | 2         |
| Version for                 | Closed    |
| Fastening track             | Other     |
| Halogen-free                | yes       |
| With connection compartment | yes       |
| Box mounting type           | Rear wall |
| Accessory mounting type     | Bolts     |
| Strain relief option        | yes       |