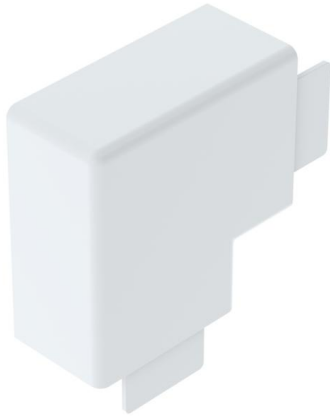


Flat angle Route BASE (LK007)

For changing direction at a 90° angle on a wall surface



Master data

Item number	920021
Type	LK007 40x60
Description 1	Flat angle
Description 2	Route BASE 40x60 9010
Brand	DQ
Dimension	105x40x105mm
Colour	Pure white; RAL 9010
Material	Polycarbonate/Acrylnitrile-butadiene-styrene
PU1	5
Unit of quantity	Piece
Weight	10.3 kg
Weight unit	kg/100 pc.

Dimensions

Width	86 mm
Height	40 mm

Technical data

Version for	Hood fitting
Fastening type	Lockable
Maintain electrical functions	no
Halogen-free	yes
Protection rating	IP30
Protective film	no
Protection rating IK code	IK07.
Permitted temperature range, max.	60 °C
Permitted temperature range, min.	-5 °C