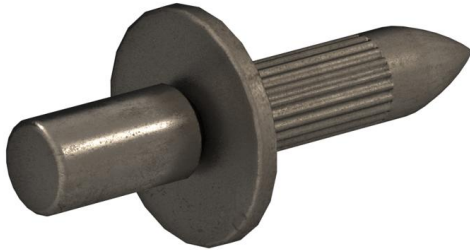


FixPin, black, grooved, wide collar ø 10,5mm, removable head (KS284)

For quick and cost-saving fixing of pipes on concrete floors.



Master data

Item number	950932
Type	KS284 FPG 4,0x18
Description 1	Drive-in dowel FixPin
Description 2	with breaking point
Brand	DQ
Dimension	4,0x18mm
Material	Steel
Surface	Bright
Surface standard	
PU1	200
Unit of quantity	Piece
Weight	0.351 kg
Weight unit	kg/100 pc.

Technical data

Hardened	yes
Head diameter	10.5 mm
Head shape	Upsetting head
Length/shank diameter	18x4 mm
Nail diameter	4 mm
Nail length	18 mm
Shank diameter	4 mm

The worker's choice

