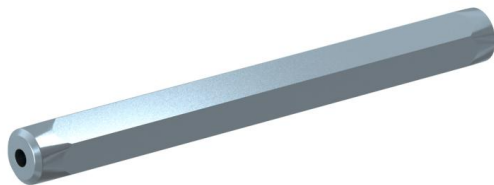


## Setting tool without hand protection (KS170)



Item 903512:

For knocking in M6 dowels, painted red.

The red colour allows easy detection of the grip area.

The unpainted end contains the 10 mm-deep opening for the head of the M6 dowel.

Item 903516:

Not painted.

### Master data

Item number	903512
Type	KS170 M6
Description 1	Setting tool
Description 2	without hand protection
Brand	DQ
Dimension	M6
Material	Steel
Surface	Electrogalvanized
Surface standard	EN ISO 19598 / EN ISO 4042
PU1	1
Unit of quantity	Piece
Weight	15.3 kg
Weight unit	kg/100 pc.

### Dimensions

Length	135 mm
--------	--------

### Technical data

With hand protection	no
Pin dimension	6 mm