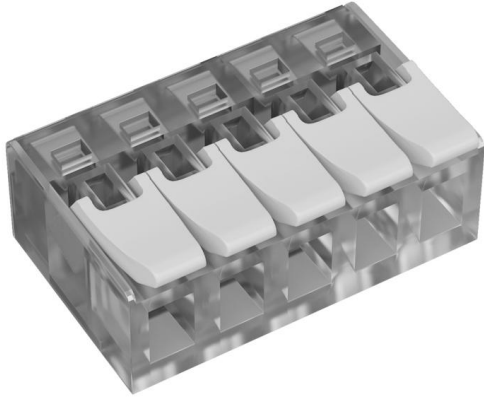


## Universal connector with lever 5-pin (EM113)

To connect conductors in connection sockets, junction boxes, canopies or renovation sockets.



### Master data

|                  |                 |
|------------------|-----------------|
| Item number      | 900412          |
| Type             | EM113 5         |
| Description 1    | Lever connector |
| Description 2    | 5-way           |
| Brand            | DQ              |
| Colour           | Transparent     |
| Material         | Polycarbonate   |
| PU1              | 25              |
| Unit of quantity | Piece           |
| Weight           | 0.608 kg        |
| Weight unit      | kg/100 pc.      |

### Dimensions

|        |         |
|--------|---------|
| Length | 18.6 mm |
| Width  | 29.8 mm |
| Height | 9.6 mm  |

## Universal connector with lever 5-pin (EM113)

### Technical data

|  |                     |
|--|---------------------|
| Stripping area AWG, max.                               | 11                  |
| Connectable conductor cross-section, single-wire, max. | 4 mm <sup>2</sup>   |
| Connectable conductor cross-section, multi-wire, max.  | 4 mm <sup>2</sup>   |
| Number of terminals                                    | 1                   |
| No. of terminals                                       | 5                   |
| Number of poles  | 5                   |
| Suitable for flexible conductors                       | yes                 |
| Suitable for solid conductors                          | yes                 |
| Suitable for multi-wire conductors                     | yes                 |
| With actuating levers                                  | yes                 |
| Nominal cross-section, max.                            | 4 mm <sup>2</sup>   |
| Nominal cross-section, min.                            | 0.2 mm <sup>2</sup> |
| Nominal voltage  | 450 V               |
| Nominal current  | 32 A                |
| Transparent  | yes                 |