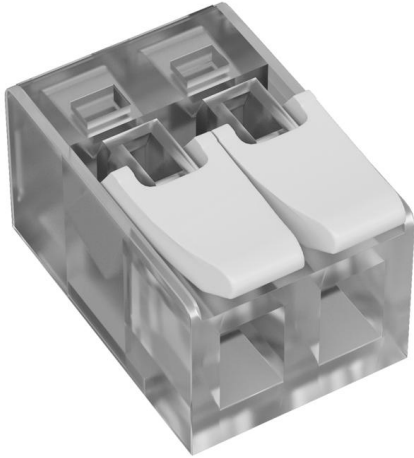


## Universal connector with lever 2-pin (EM113)

To connect conductors in connection sockets, junction boxes, canopies or renovation sockets.



### Master data

Item number	900410
Type	EM113 2
Description 1	Lever connector
Description 2	double
Brand	DQ
Colour	Transparent
Material	Polycarbonate
PU1	100
Unit of quantity	Piece
Weight	0.245 kg
Weight unit	kg/100 pc.

### Dimensions

Length	18.6 mm
Width	13 mm
Height	9.6 mm

## Universal connector with lever 2-pin (EM113)

### Technical data

Stripping area AWG, max.	11
Connectable conductor cross-section, single-wire, max.	4 mm <sup>2</sup>
Connectable conductor cross-section, multi-wire, max.	4 mm <sup>2</sup>
Number of terminals	1
No. of terminals	2
Number of poles	2
Suitable for flexible conductors	yes
Suitable for solid conductors	yes
Suitable for multi-wire conductors	yes
With actuating levers	yes
Nominal cross-section, max.	4 mm <sup>2</sup>
Nominal cross-section, min.	0.2 mm <sup>2</sup>
Nominal voltage	450 V
Nominal current	32 A
Transparent	yes