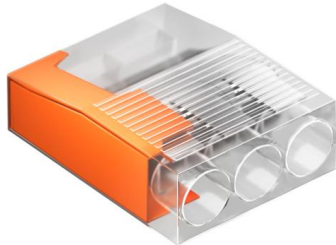


## Mini screwless terminal, 3-pin (EM095)

To connect conductors in connection sockets, junction boxes, canopies or renovation sockets.



### Master data

Item number	900476
Type	EM095 3x0,5-2,5
Description 1	Mini plug-in terminal
Description 2	triple
Brand	DQ
Dimension	3x0,5-2,5mm <sup>2</sup>
Colour	Orange
Material	Polycarbonate
PU1	100
Unit of quantity	Piece
Weight	0.155 kg
Weight unit	kg/100 pc.

### Dimensions

Length	16.5 mm
Width	14 mm
Height	5.8 mm

## Mini screwless terminal, 3-pin (EM095)

### Technical data

Stripping area AWG, max.	11
Connectable conductor cross-section, single-wire, max.	2.5 mm <sup>2</sup>
Number of terminals	1
No. of terminals	3
Number of poles	3
Suitable for flexible conductors	no
Suitable for solid conductors	yes
Suitable for multi-wire conductors	no
With actuating levers	no
Nominal cross-section, max.	2.5 mm <sup>2</sup>
Nominal cross-section, min.	0.5 mm <sup>2</sup>
Nominal voltage	450 V
Nominal current	24 A
Transparent	yes