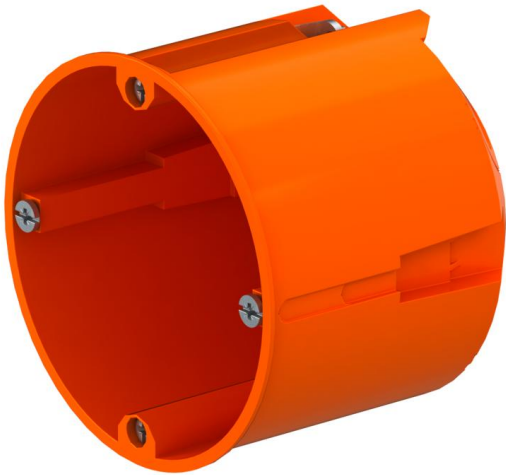


Cavity wall boxes with membrane Depth 61mm (EM036)

Suitable for usage in low energy houses, windproof through membrane



Master data

| | |
|------------------|----------------------------|
| Item number | 902656 |
| Type | EM036 Ø68 H61 |
| Description 1 | Cavity wall box |
| Description 2 | with diaphragm, depth 61mm |
| Brand | DQ |
| Dimension | Ø68mm, H61mm |
| Colour | Orange |
| Material | Polypropylene |
| PU1 | 40 |
| Unit of quantity | Piece |
| Weight | 2.96 kg |
| Weight unit | kg/100 pc. |

Dimensions

| | |
|--------|-------|
| Height | 61 mm |
|--------|-------|

Cavity wall boxes with membrane Depth 61mm (EM036)

| Technical data | |
|-------------------------------|---------------------|
| No. of entries | 8 |
| Number of switch boxes | 1 |
| Type of housing penetration | Sealing membrane |
| Version for | Single |
| Type | Accessory socket |
| Device fixing | Screws , |
| Equipment | Without |
| Cover fastening | Not applicable |
| Entry from rear | yes |
| Shape | Round |
| Maintain electrical functions | Without |
| for pipe diameter | 20 mm |
| Halogen-free | yes |
| Max. Conductor cross-section | 2.5 mm ² |
| With screening | no |
| With bolts | yes |
| Mounting type | Cavity wall |
| Sealable | no |
| Protection rating | IP40 |
| Support | Without |
| Airtight | yes |