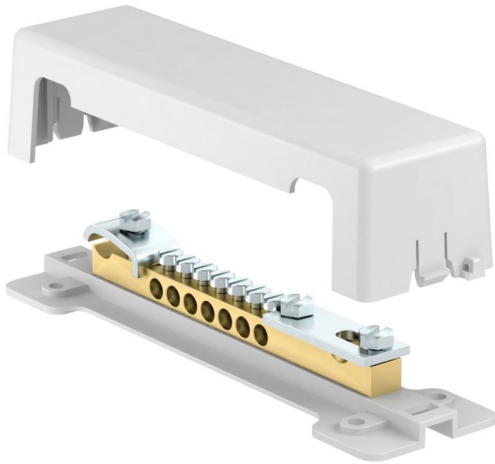


Equipotential bonding rail (EM021)

Suitable for compensating and preventing voltage differences and possible resulting voltage arcing (equipotential bonding).



Master data

Item number	905107
Type	EM021 7-25
Description 1	Equipotential bonding rail
Brand	DQ
Dimension	188x52x44,5
Colour	Grey
Material	Brass
PU1	1
Unit of quantity	Piece
Weight	25.6 kg
Weight unit	kg/100 pc.

Dimensions

Length	188 mm
Width	52 mm
Height	44.5 mm

Equipotential bonding rail (EM021)

Technical data	
Quantity of flat conductor connections up to 30 mm	1
Quantity of flat conductor connections up to 40 mm	0
Quantity of cable connections up to 16 mm ² , rigid	0
Quantity of cable connections up to 25 mm ² , rigid	0
Quantity of cable connections up to 6 mm ² , rigid	0
Quantity of cable connections up to 95 mm ² , rigid	0
Quantity of round conductor connections 10 mm	0
Quantity of round conductor connections 8 mm	0
Quantity of round conductor connections 8-10 mm	1
Quantity of round conductor connections, total	1
Version for	With cover hood
Type	Fixed structure
Explosion-tested version	no