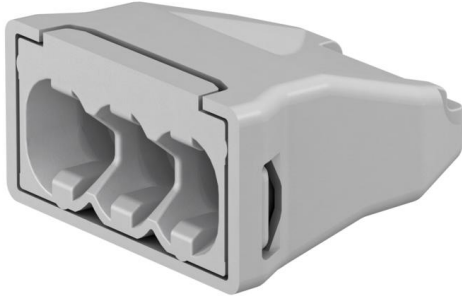


Screwless terminal, 3-pin (EM001)

To connect conductors in connection sockets, junction boxes, canopies or renovation sockets.



Master data

Item number	904546
Type	EM001 3
Description 1	Plug-in terminal
Description 2	triple
Brand	DQ
Dimension	3 x 0,5-2,5mm ²
Colour	Anthracite
Material	Polyamide
PU1	100
Unit of quantity	Piece
Weight	0.13 kg
Weight unit	kg/100 pc.

Dimensions

Length	17.2 mm
Width	15.7 mm
Height	8.9 mm

Screwless terminal, 3-pin (EM001)

Technical data

Stripping area AWG, max.	9
Connectable conductor cross-section, single-wire, max.	2.5 mm ²
Connectable conductor cross-section, multi-wire, max.	2.5 mm ²
Number of terminals	1
No. of terminals	3
Number of poles	3
Suitable for flexible conductors	no
Suitable for solid conductors	no
Suitable for multi-wire conductors	yes
With actuating levers	no
Nominal cross-section, max.	2.5 mm ²
Nominal cross-section, min.	0.5 mm ²
Nominal voltage	450 V
Nominal current	24 A
Transparent	yes